



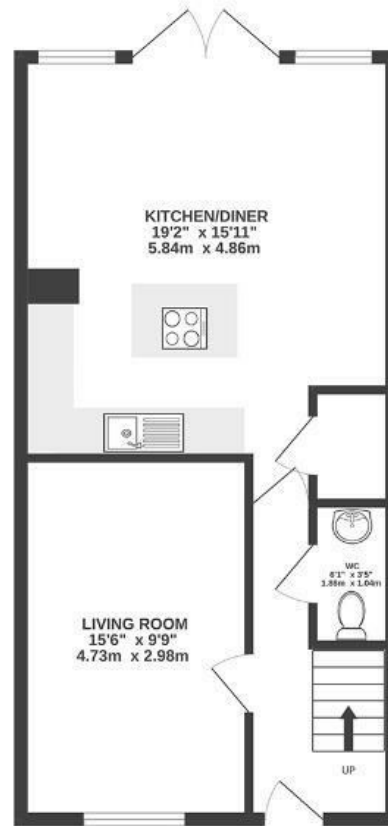
# Old Pump House Close

BEDMINSTER DOWN

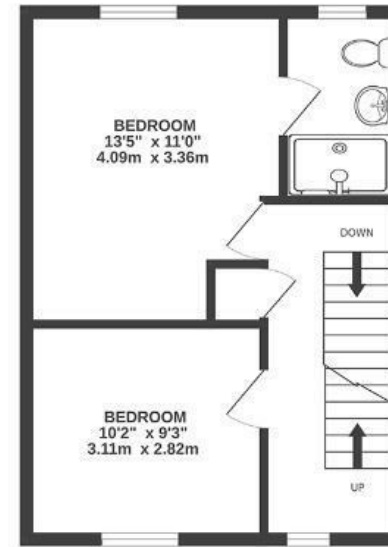
APPROXIMATE FLOOR AREA  
115 SQM / 1241 SQFT



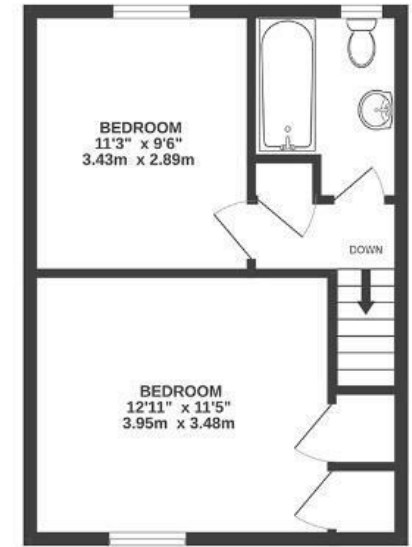
GROUND FLOOR



FIRST FLOOR



SECOND FLOOR



Boardwalk

# Old Pump House

, BRISTOL

£

£515,000

zzz

4 Bedrooms



BS13 7DL



2 Bathrooms

*"The location is fantastic, being close to north street with excellent transport links and so many green space areas to walk. Since it's such a small development it's so quiet and the neighbours are all amazing."*

